

San Joaquin County
2021 Redistricting
COI to Draft Maps



Agenda

Things we will cover:

- Timeline
- Final State Redistricting Data Released
- Community of Interest Testimony & Maps
- From COI to Draft Maps

Redistricting Timeline



Public Workshops



Census Data



Public Meetings



Draft Maps
Published



Adoption
Hearing

Public Outreach and Education

Community Meetings

Public Hearings

AUG

AUGUST 17
Outreach #1

SEPT

SEPTEMBER 15
Outreach #2

SEPTEMBER 29
Outreach #3

OCT

OCTOBER 13
Meeting #1

OCTOBER 27
Meeting #2

NOV

NOVEMBER 10
MEETING #3

NOVEMBER 16
Present Final Maps

DEC

DECEMBER 7
Approve Final Map

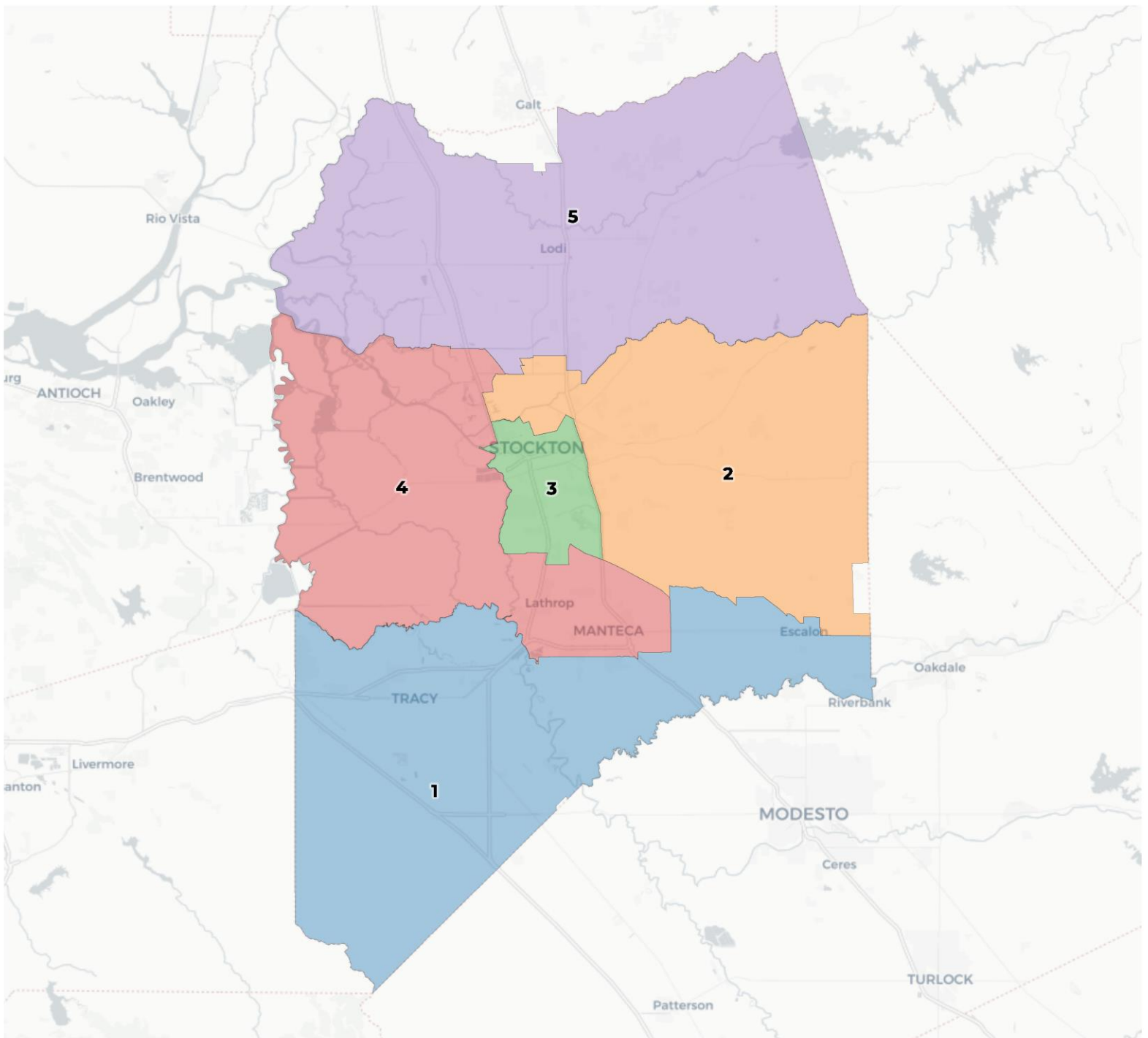
Final California Redistricting Data

Statewide Database Released Final Dataset

On September 20th, the Statewide Database released the prisoner reallocated dataset. This dataset is the final data we need to conduct this redistricting.

We can now start drawing draft maps.

First let's look at the current lines with the population using the final data set.



2020 Census

	1	2	3	4	5
Population	176,687	150,738	147,370	155,827	146,562
Deviation	21,250	-4,699	-8,067	390	-8,875
Deviation %	13.7%	-3.0%	-5.2%	0.3%	-5.7%
Other	70,423	39,023	25,816	59,890	65,505
Other %	39.9%	25.9%	17.5%	38.4%	44.7%
Latino	56,621	66,070	88,659	61,973	51,683
Latino %	32.0%	43.8%	60.2%	39.8%	35.3%
Asian	40,205	30,630	16,892	23,607	23,303
Asian %	22.8%	20.3%	11.5%	15.1%	15.9%
Black	9,438	15,015	16,003	10,357	6,071
Black %	5.3%	10.0%	10.9%	6.6%	4.1%

Citizen Voting Age Population (CVAP)

	1	2	3	4	5
Total CVAP	94,631	88,185	73,176	100,800	90,783
Other CVAP	50,994	33,159	20,193	52,300	52,541
Other CVAP %	53.9%	37.6%	27.6%	51.9%	57.9%
Latino CVAP	25,836	27,650	33,769	30,460	20,702
Latino CVAP %	27.3%	31.4%	46.1%	30.2%	22.8%
Asian CVAP	12,631	17,959	8,564	11,060	13,217
Asian CVAP %	13.3%	20.4%	11.7%	11.0%	14.6%
Black CVAP	5,170	9,417	10,650	6,980	4,323
Black CVAP %	5.5%	10.7%	14.6%	6.9%	4.8%

2020 Census

	1	2	3	4	5
Population	176,687	150,738	147,370	155,827	146,562
Deviation	21,250	-4,699	-8,067	390	-8,875
Deviation %	13.7%	-3.0%	-5.2%	0.3%	-5.7%
Other	70,423	39,023	25,816	59,890	65,505
Other %	39.9%	25.9%	17.5%	38.4%	44.7%
Latino	56,621	66,070	88,659	61,973	51,683
Latino %	32.0%	43.8%	60.2%	39.8%	35.3%
Asian	40,205	30,630	16,892	23,607	23,303
Asian %	22.8%	20.3%	11.5%	15.1%	15.9%
Black	9,438	15,015	16,003	10,357	6,071
Black %	5.3%	10.0%	10.9%	6.6%	4.1%

Citizen Voting Age Population (CVAP)

	1	2	3	4	5
Total CVAP	94,631	88,185	73,176	100,800	90,783
Other CVAP	50,994	33,159	20,193	52,300	52,541
Other CVAP %	53.9%	37.6%	27.6%	51.9%	57.9%
Latino CVAP	25,836	27,650	33,769	30,460	20,702
Latino CVAP %	27.3%	31.4%	46.1%	30.2%	22.8%
Asian CVAP	12,631	17,959	8,564	11,060	13,217
Asian CVAP %	13.3%	20.4%	11.7%	11.0%	14.6%
Black CVAP	5,170	9,417	10,650	6,980	4,323
Black CVAP %	5.5%	10.7%	14.6%	6.9%	4.8%

2020 Census

	1	2	3	4	5
Population	176,687	150,738	147,370	155,827	146,562
Deviation	21,250	-4,699	-8,067	390	-8,875
Deviation %	13.7%	-3.0%	-5.2%	0.3%	-5.7%
Other	70,423	39,023	25,816	59,890	65,505
Other %	39.9%	25.9%	17.5%	38.4%	44.7%
Latino	58,970	65,970	89,859	68,977	51,683
Latino %	32.0%	43.8%	60.2%	39.8%	35.3%
Asian	10,611	10,611	18,899	15,607	23,303
Asian %	22.8%	20.3%	11.5%	15.1%	15.9%
Black	6,578	15,099	10,650	11,717	6,071
Black %	5.3%	10.0%	10.9%	6.6%	4.1%

The total deviation of the plan is the sum of the absolute values of the highest and lowest districts. *Here the plan deviation is **19.4%***

Citizen Voting Age Population (CVAP)

	1	2	3	4	5
Total CVAP	94,631	88,185	73,176	100,800	90,783
Other CVAP	50,994	33,159	20,193	52,300	52,541
Other CVAP %	53.9%	37.6%	27.6%	51.9%	57.9%
Latino CVAP	25,836	27,650	33,769	30,460	20,702
Latino CVAP %	27.3%	31.4%	46.1%	30.2%	22.8%
Asian CVAP	12,631	17,959	8,564	11,060	13,217
Asian CVAP %	13.3%	20.4%	11.7%	11.0%	14.6%
Black CVAP	5,170	9,417	10,650	6,980	4,323
Black CVAP %	5.5%	10.7%	14.6%	6.9%	4.8%

Communities of Interest

Outreach Hearings

After two outreach hearings, we've received public and Commissioner input. The themes of testimony received:

- Unite Tracy with Mountain House
- Could create a Commuter District – linking Mountain House to Tracy to Western Ranch in South Stockton
- Stockton must be split because of its size

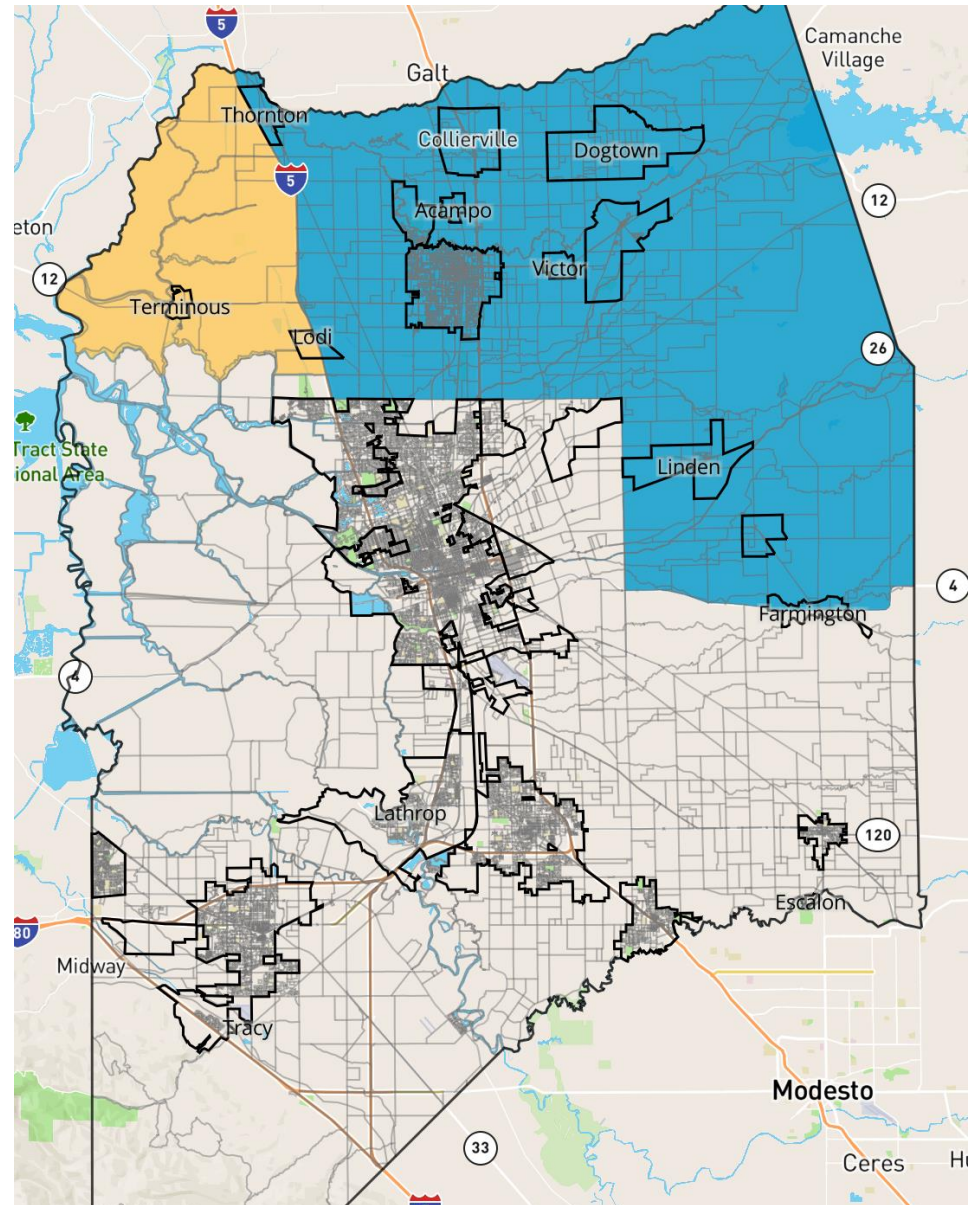
Many of these themes can be seen in the district map submissions received to date.

Map Submissions

COI Map:

Blue Area – Lodi American
Viticultural Area

Yellow Area – Lodi AVA West
of I5

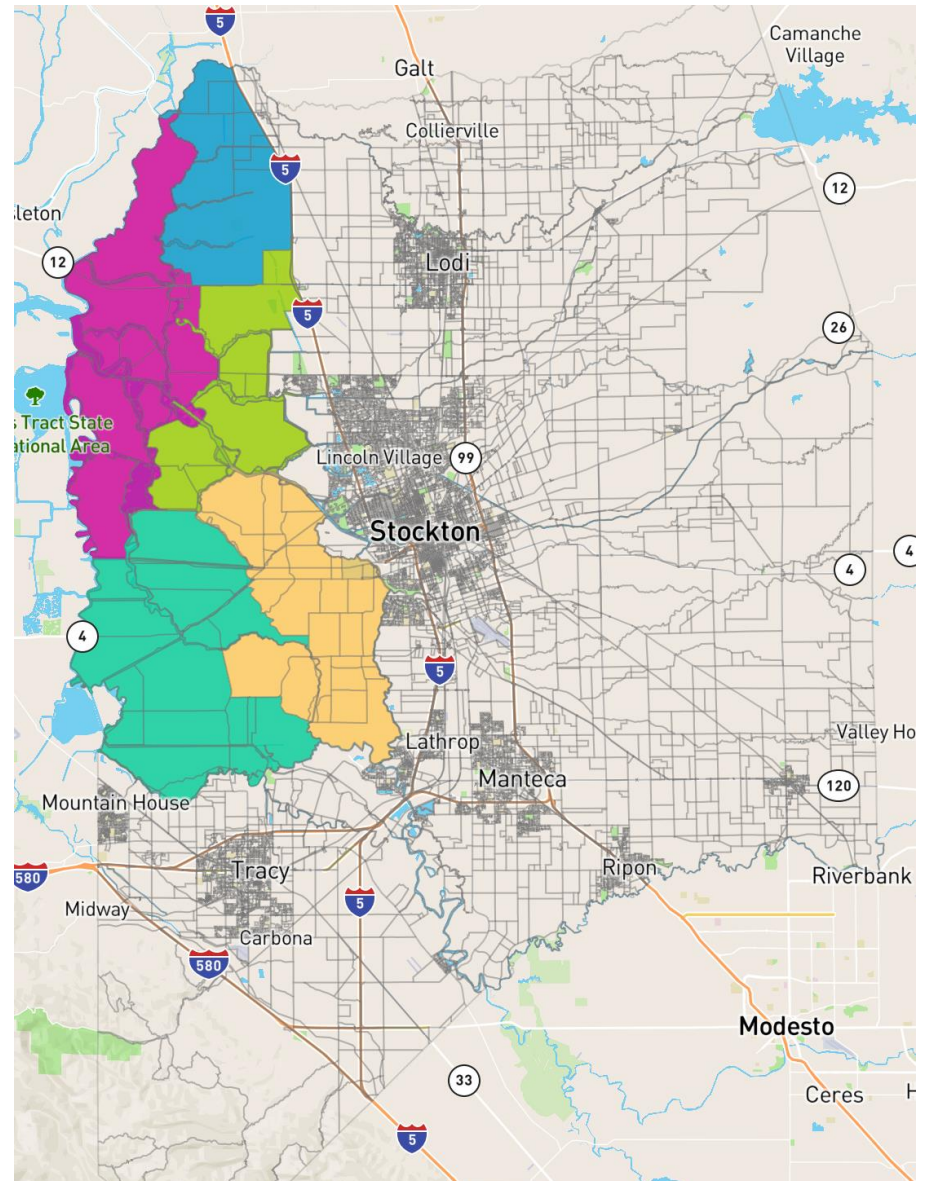


Map Submissions

COI Map:

Delta

i think the delta area should NOT be put in a single district. i think it'd be better if SEVERAL districts had a VESTED interest in the area. there's not enough people living there otherwise for water issues. the colored areas are meaningless, just to show having a couple DIFFERENT districts in the OVERALL area.

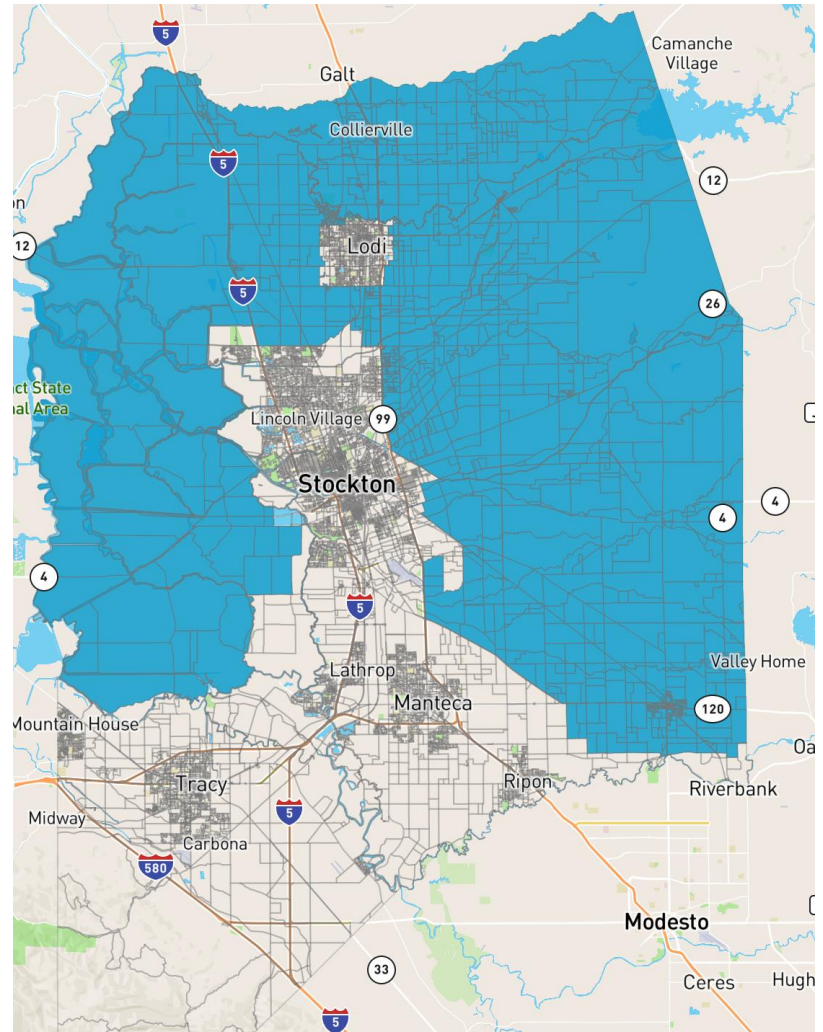


Map Submissions

COI Map:

Community of Agriculture

This is a collective of rural areas that are interwoven by shared resources. Public schools, places of worship, local business, and employment. The County is the 7th Largest producer of Agriculture. Unincorporated Cities: Acampo, Collierville, Farmington, French Camp, Lockeford, Morada, Thornton, Victor, Waterloo, Woodbridge, Linden.

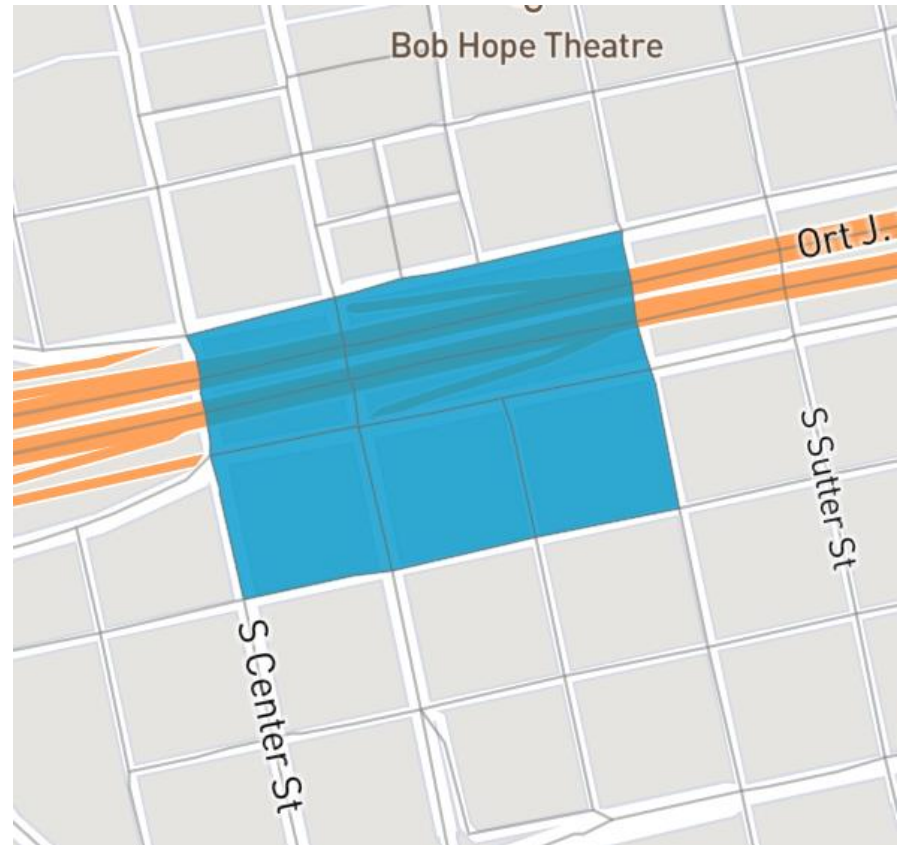


Map Submissions

COI Map:

Little Manila

Just for the record - granted there's not much left after State Route 4, and not very populated present-day, so probably little overall effect on redistricting, but it's still a historic site of widely recognized cultural significance.

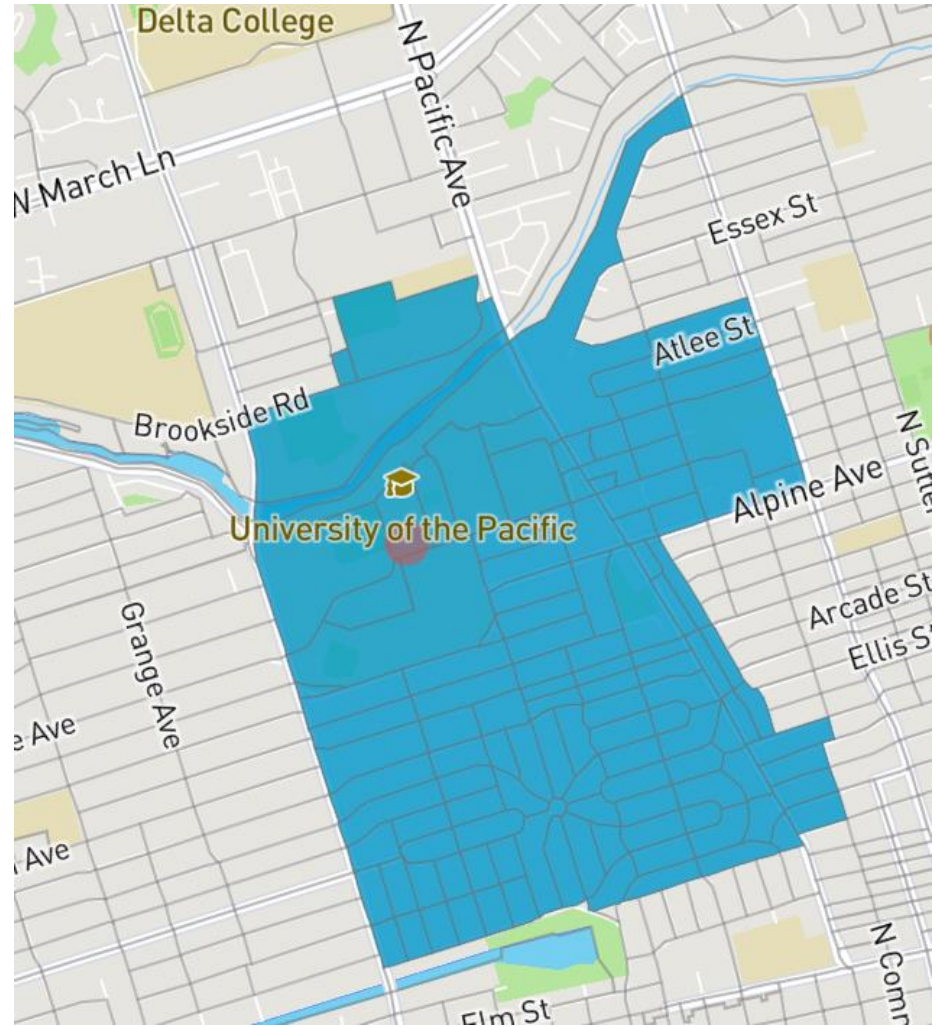


Map Submissions

COI Map:

University District

Centric to the University
community.

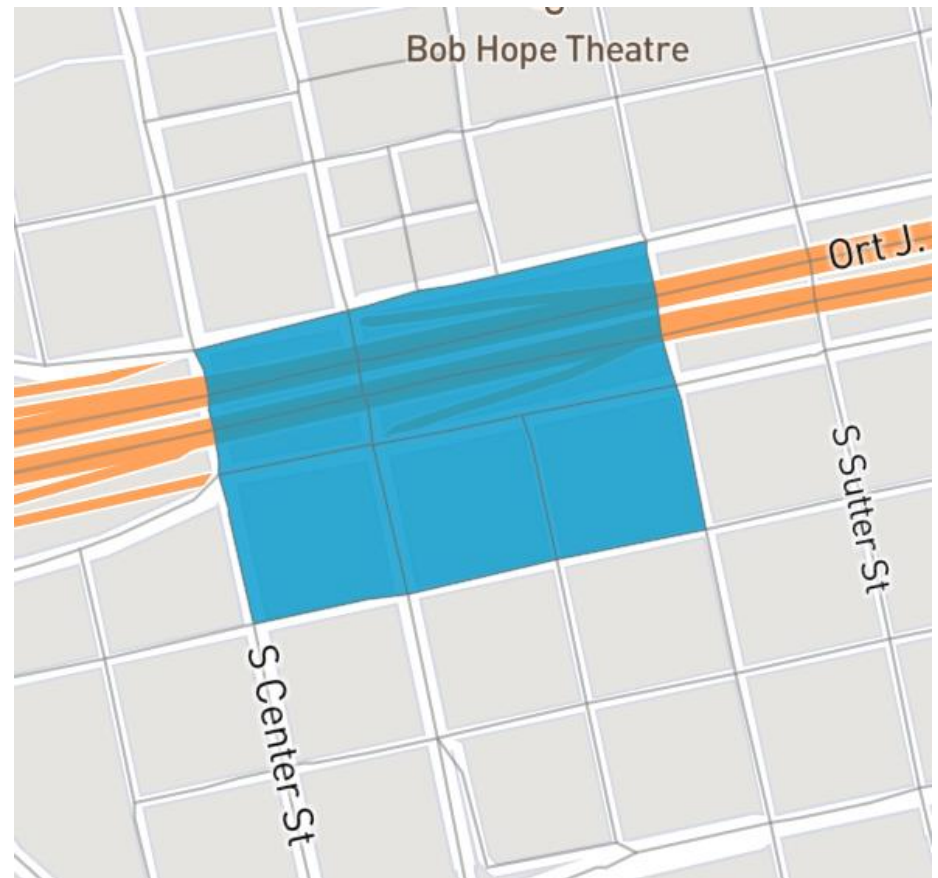


Map Submissions

COI Map:

Little Manila

Just for the record - granted there's not much left after State Route 4, and not very populated present-day, so probably little overall effect on redistricting, but it's still a historic site of widely recognized cultural significance.

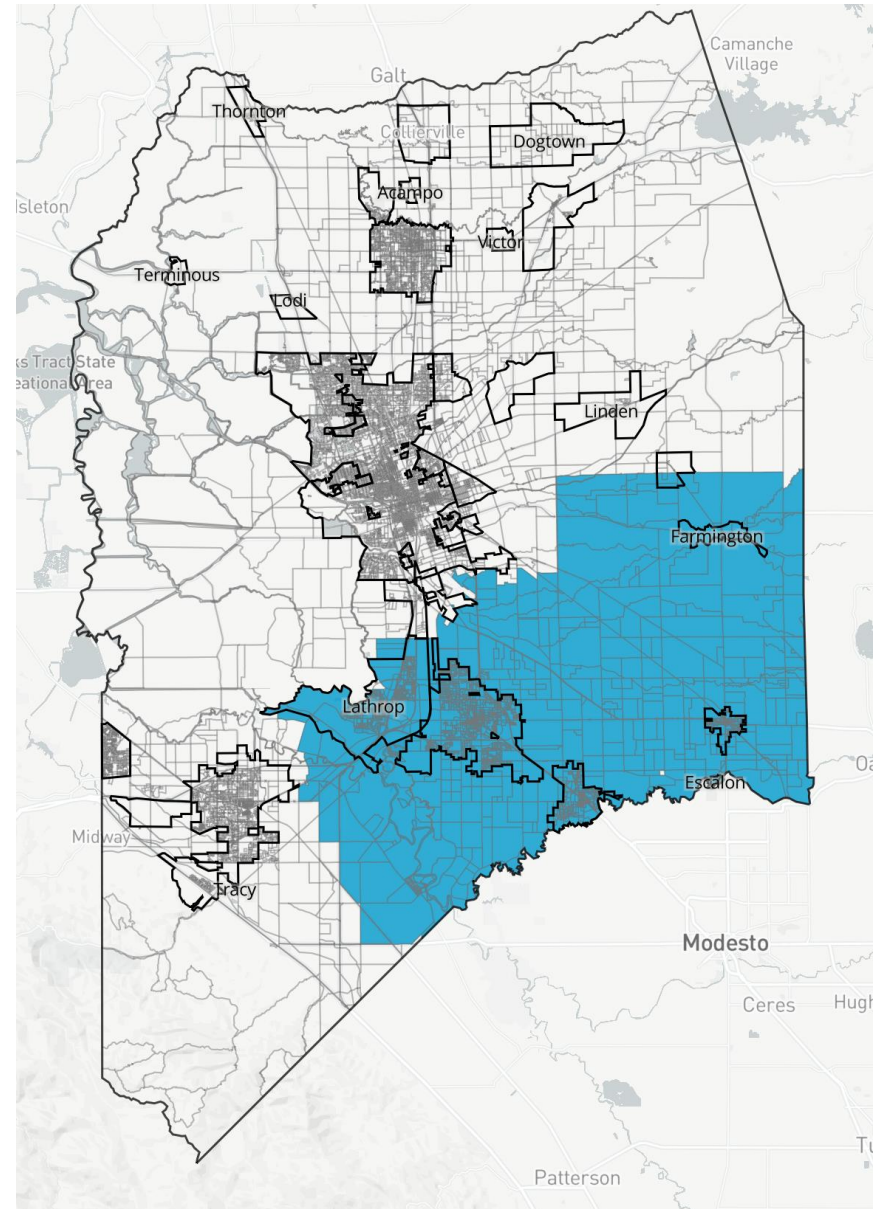


Map Submissions

District Map: Magee

1 District Plan – population
155,462

Including Lathrop, Manteca,
Escalon, Ripon



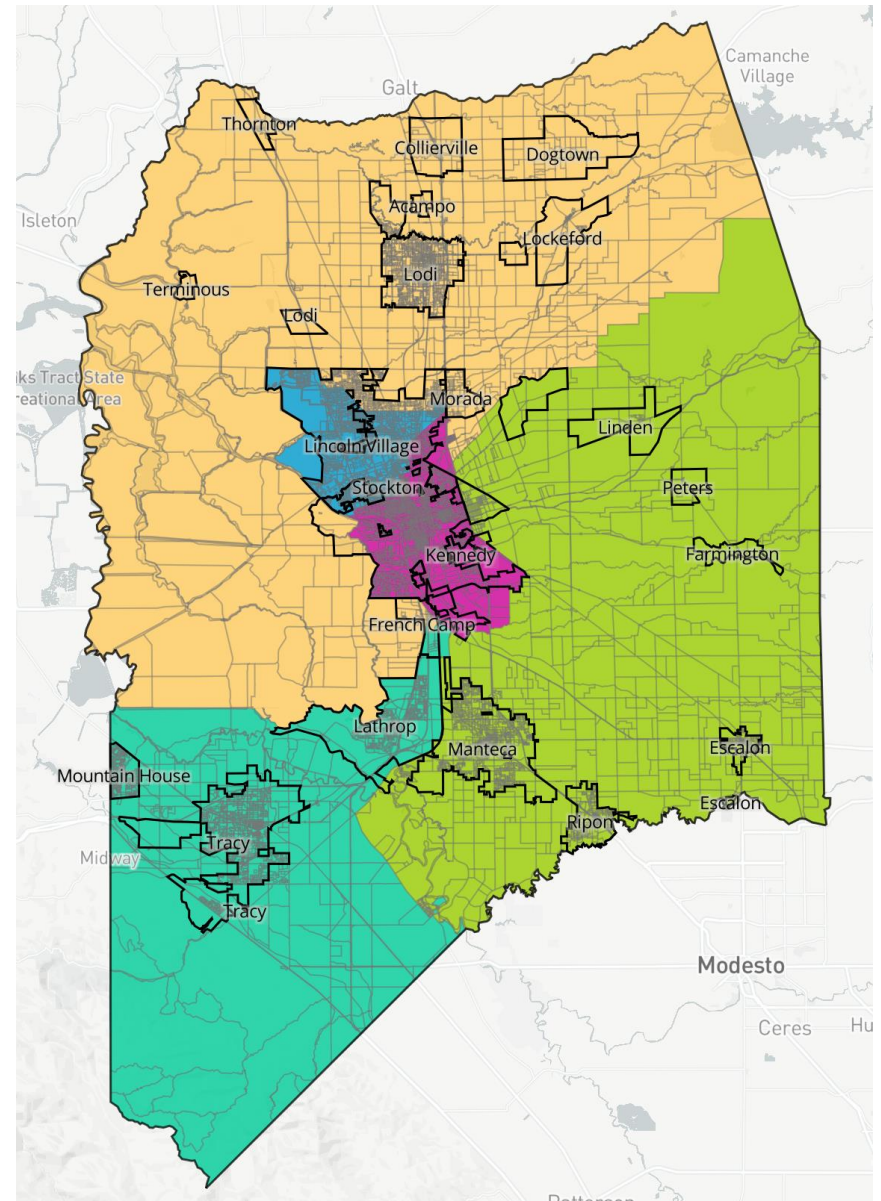
Map Submissions

District Map:
Communities First

District Plan

Deviation 2.4%

151,720 to 157,335 | Ideal
155,462



Map Submissions

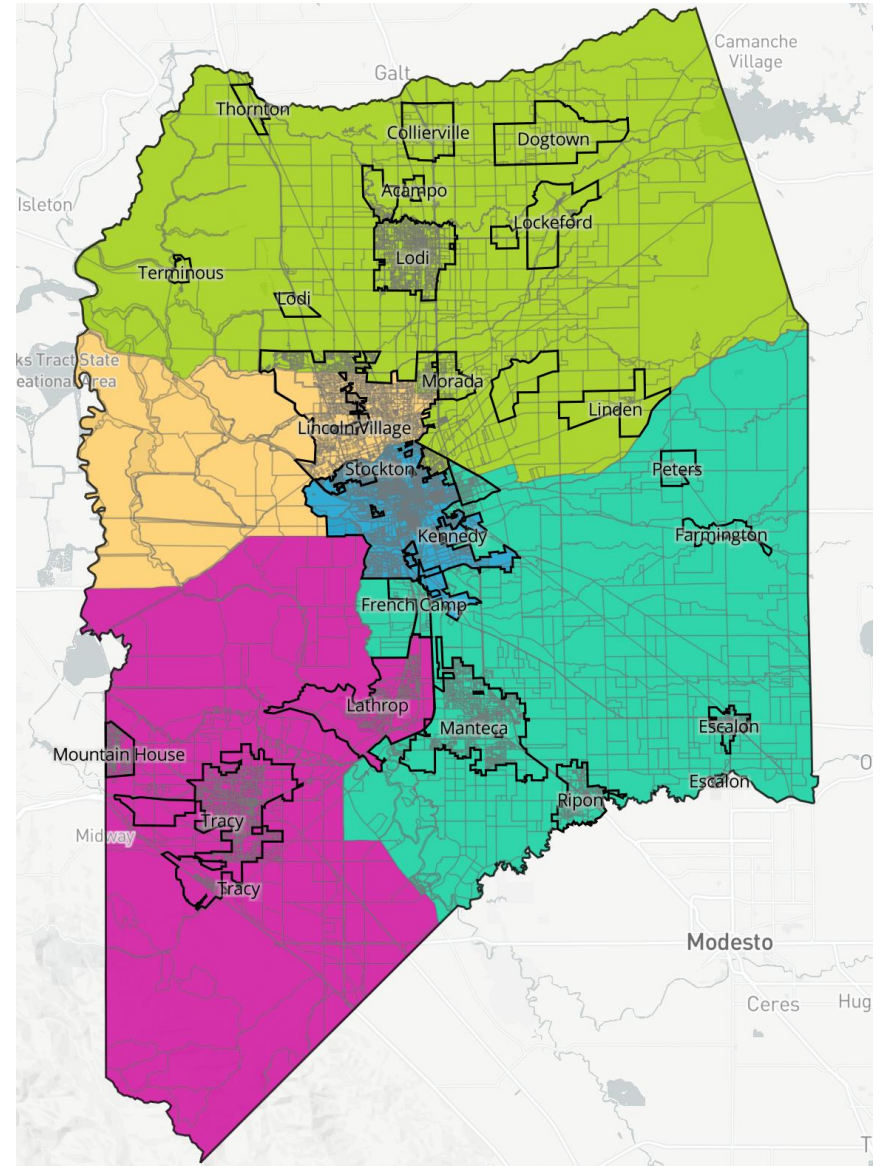
District Map:

No Splits

District Plan

Deviation – 2.54%

151,510 to 156,853 | Ideal
155,462



Map Submissions

District Map:

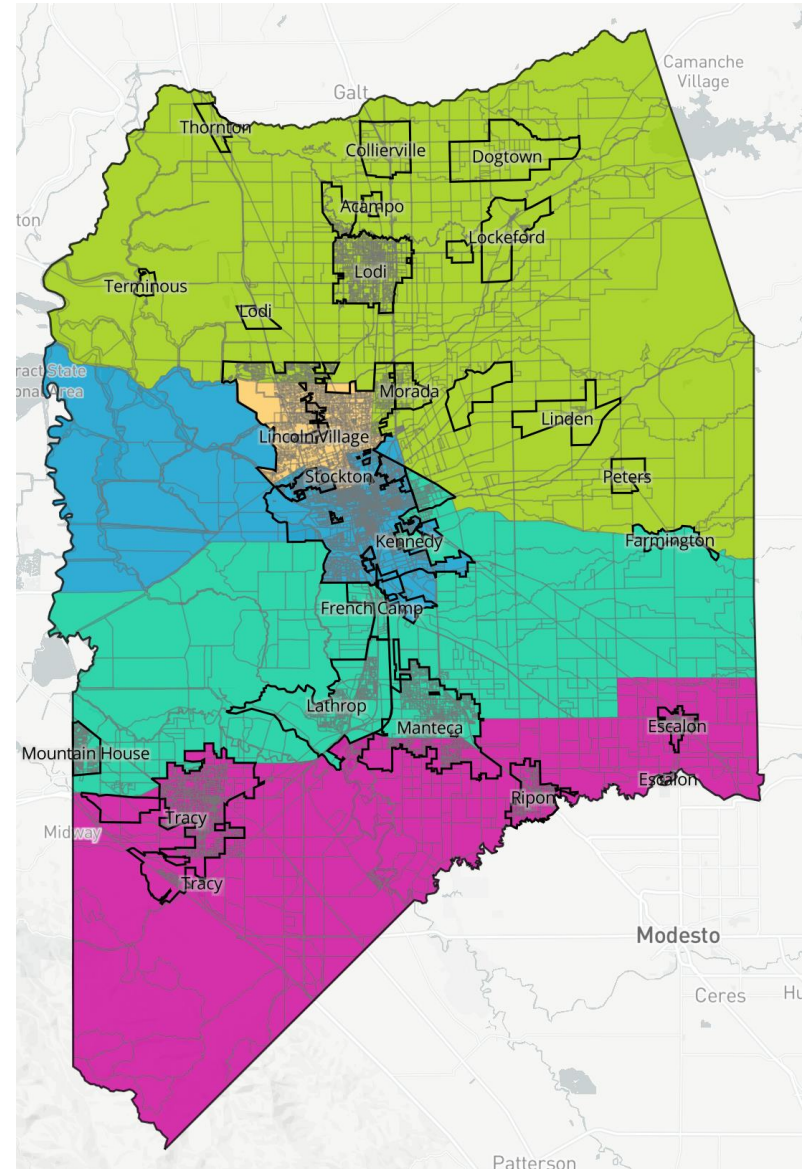
if Mountain House were
Not with Tracy, then
what?!?! (hypothetical only)

District Plan

Deviation – 1.28%

153,479 to 156,671 | Ideal

155,462



Map Submissions

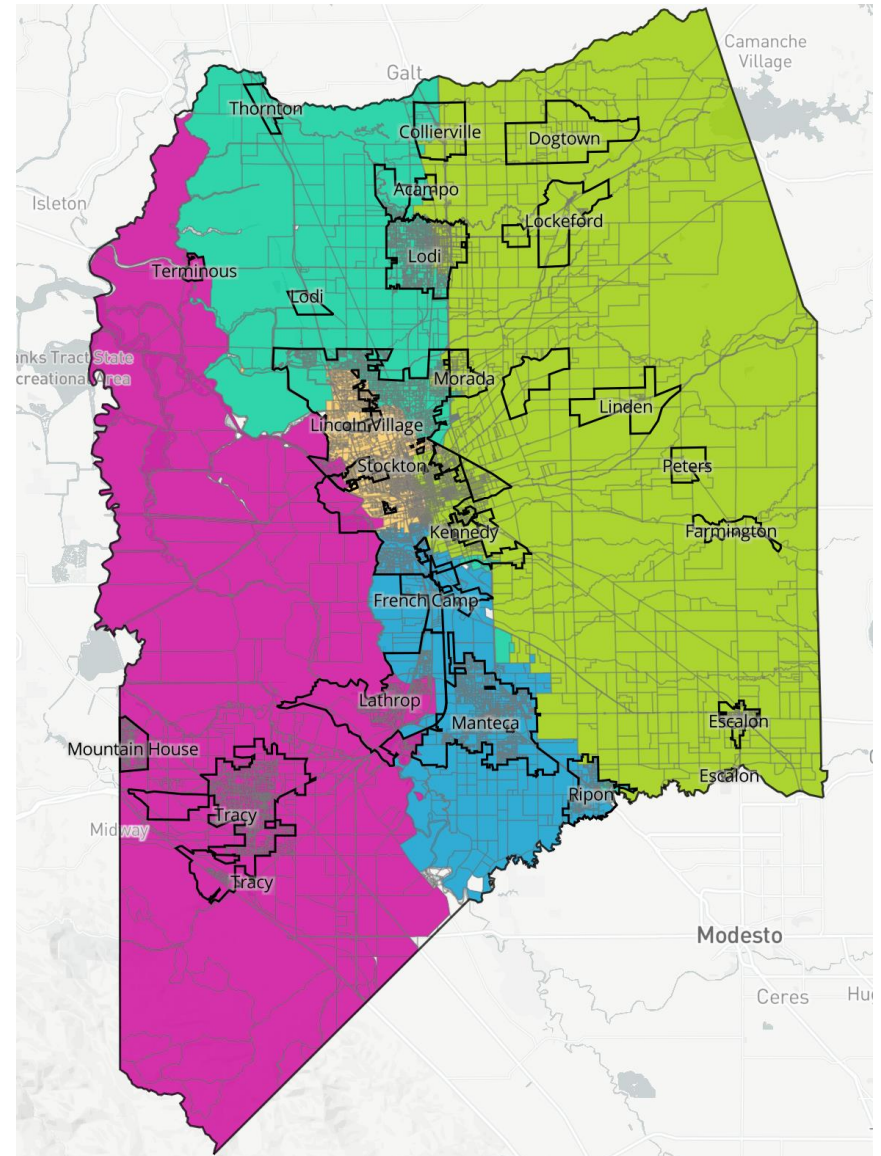
District Map:

Community District

District Plan

Total Deviation 1.66%

152,889 to 156,439 | Ideal
155,462



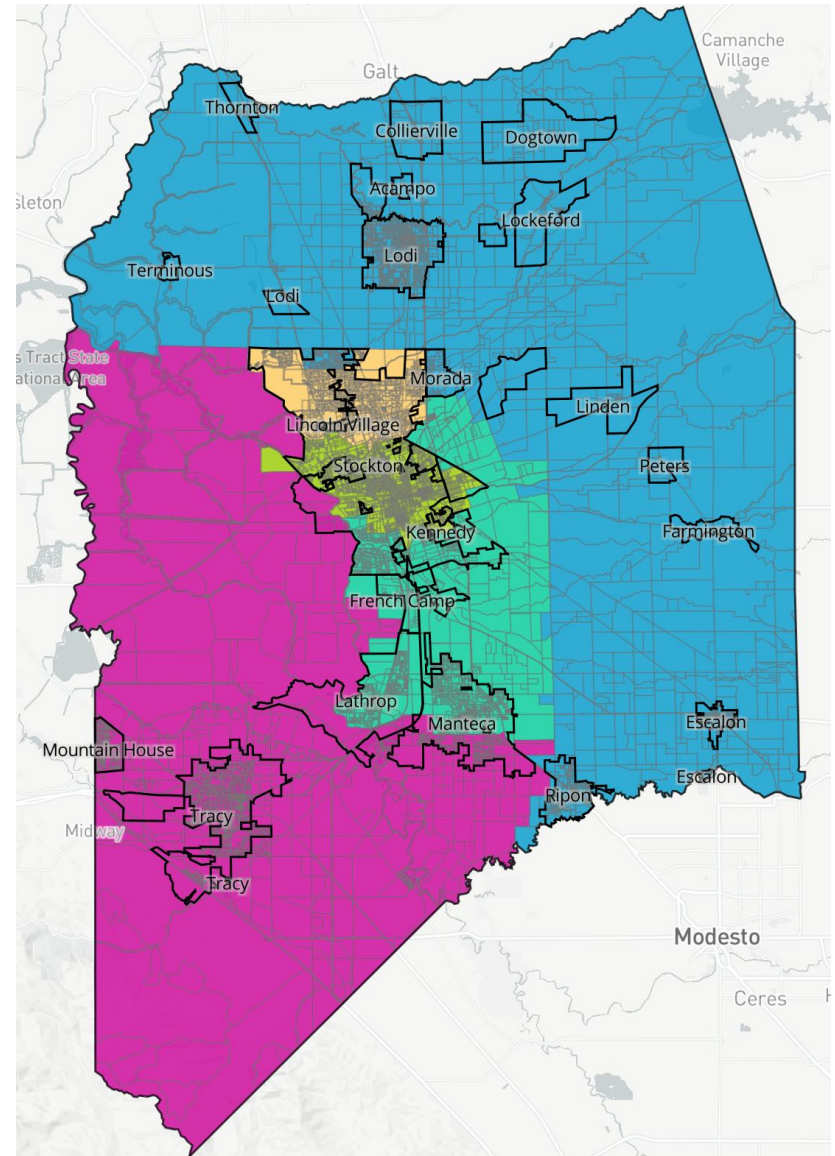
Map Submissions

District Map:

District Plan

Total Deviation 0.01%

155,441 to 155,464 | Ideal
155,462

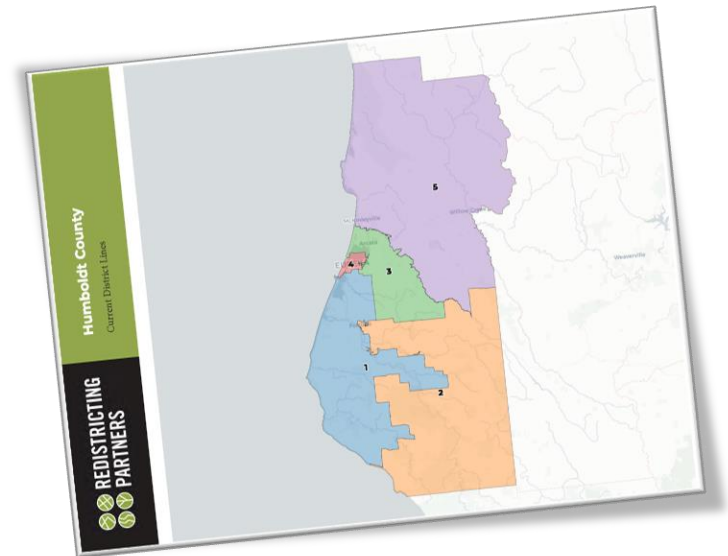


From COI to Draft Maps

Getting from input to new proposed maps

Future hearings will allow for changes to the Drafts prior to adoption.

- Hearing on draft maps (next meeting)
- Selection of recommended map (October 26)



From COI to Draft Maps

Getting from input to new proposed maps

All public plans and Redistricting Partners Draft Maps will include:

- Overview Page
- Data Tables
- Individual district pages with data

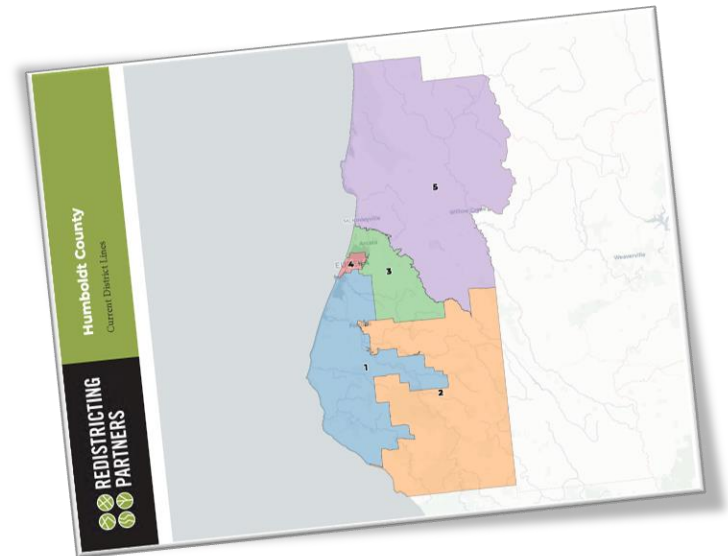


From COI to Draft Maps

Getting from input to new proposed maps

Redistricting Partners needs feedback from the RAC on potential draft plan versions.

- All plans will follow the required criteria, VRA, Compactness, equal population, etc.
- Need feedback from the RAC and community on potential versions of draft maps





REDISTRICTING PARTNERS